



Culturally Based Services with Indigenous and Ethnic Populations

*Gladys C. Lee, LCSW
Vice President
Pacific Clinics*

California Mental Health Policy Forum
September 14, 2006



★
ASIAN PACIFIC
Policy & Planning Council

What is A3PCON?

- The Asian Pacific Policy & Planning Council (A3PCON) is a coalition of Asian and Pacific Islander American health, human service, educational, cultural and policy agencies, and individuals who advocate for the rights and services of the APIA community in Southern California, primarily in Los Angeles County.
- The purpose of A3PCON is to serve as an association that seeks community empowerment through strategies of advocacy and consensus building to respond to the future, emerging and unmet needs of Asian and Pacific Islander communities.
- Established in 1976, this year marks A3PCON's 30th anniversary initiating action on policy and planning issues that affect the APIA community.

A3PCON Mental Health Committee

- The goal of the A3PCON Mental Health Committee is to assure access of culturally and linguistically competent services to API residents in need of mental health care.
- This is also achieved through:
 - planning
 - advocacy
 - resource development

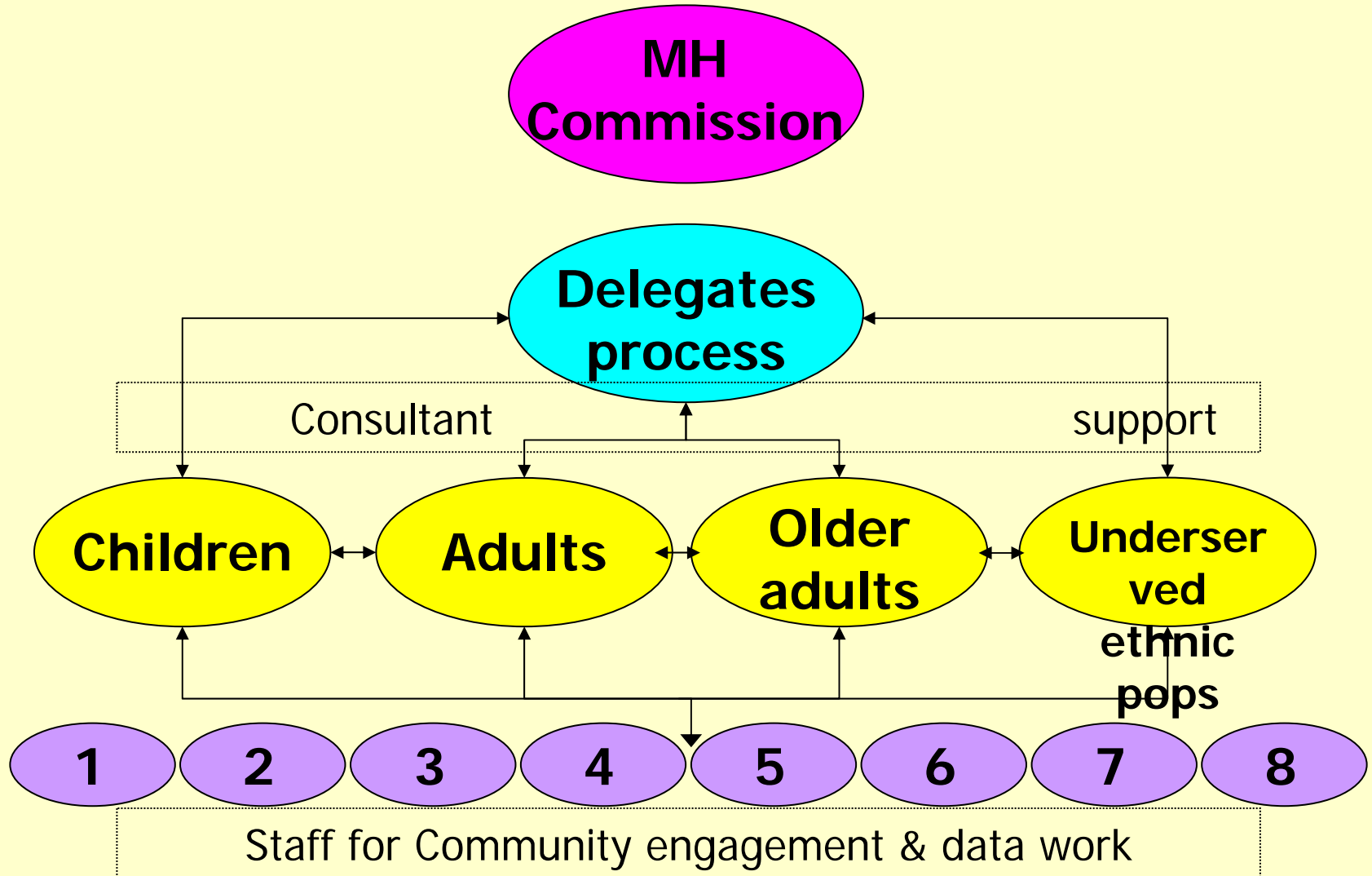


Gladys Lee, Committee Chair (left) and Past A3PCON Presidents



*Los Angeles County
MHSA Planning Process
and A3PCON's Role
and Participation*

Planning Structure



Countywide Planning

- Delegate and alternate representing A3PCON at the Stakeholders group.
- Member of the Underrepresented Ethnic Population (UREP) workgroup and participation in the development of guiding principles and recommended methodology.

LAC MHSA Stakeholders UREP Guiding Principles (as of 6/7/05)

Principle 1: Dedicated Funding

Ongoing funding for unserved/underserved/inappropriately served ethnic populations across all age groups consistent with language, cultural and demographic needs.

Principle 2: Expansion and Transformation of Mental Health Services

Expand MH system's capacity to provide services to under-represented ethnic populations across age groups by increasing the # of community-based organizations and by strengthening partnerships with providers with long-standing community ties.

LAC MHSA Stakeholders

UREP Guiding Principles

Principle 3: Involvement, Engagement and Empowerment of Consumers & Families

Fully engage consumers, families & community members such as parents, neighbors and significant others in culturally effective ways at all levels of the mental health system, including developing treatment options, planning, advocacy, accountability, employment and education.

Principle 4: Workforce Development & Retention

Develop & implement programs that increase the capacity of MH system to recruit hire, train & retain qualified bilingual-bicultural professionals, paraprofessionals, consumers, & their families who live in and/or reflect community demographics.

LAC MHSA Stakeholders

UREP Guiding Principles

Principle 5: Access, Outreach and Engagement

Develop and implement cultural & linguistic strategies, policies, procedures to increase access to culturally appropriate MH services for un-served, underserved and inappropriately served ethnic populations, including outreach, engagement, education, responding to historical, geographic disparities and barriers.

Principle 6: Cultural Competency

Develop cross-cultural & multi-cultural competency programs to ensure quality services for all communities. Expand theory & practice of community MH to move beyond traditional models.

Expansion & Transformation: UREP Recommended Methodology

Accountability

- Holding system accountable for expansion & transformation will rest with an appointed countywide oversight committee responsible for reviewing progress of outcomes.
 - Strengthen partnerships with providers with longstanding community ties
 - UREP groups to receive more systems development funding
 - FSP partnership criteria flexible enough to include underrepresented populations, particularly with co-occurring disorders.

Expansion & Transformation: UREP Recommended Methodology

Expansion

Broad-based Outcomes and Strategies:

- Expand existing, effective and culturally appropriate community-based MH models & services to un-served, underserved, inappropriately served, and under-represented ethnic populations.
- Increase access to MHS for individuals from UREP groups.
- Outreach & engagement to increase awareness about mental health for UREP groups. This has to be supported by the availability of culturally & linguistically competent services.
- Develop a short- and long-term strategy to support a multilingual, multicultural workforce that meets community need and key outcomes of the MHSA.

Expansion & Transformation: UREP Recommended Methodology

Transformation

Broad-based Outcomes and Strategies:

- Dedicated funding to organize, support, educate & train UREP consumers/families in advocacy, leadership, recovery, self-help.
- Develop stigma reduction outreach and education campaign.
- Provide services in nontraditional settings, also making sure that services are competent and culturally appropriate.
- Create a mentoring and technical assistance program to increase the number of large, medium and small sized community based providers that serve UREP populations.
- Reduce disparity rate for UREP within the County.
- Increase recruiting, hiring, training, and retaining new & existing qualified multilingual, multicultural staff.



Outreach and Engagement

Outreach and Engagement

- A3PCON was selected to conduct “community engagement” presentations in the threshold languages.
- A3PCON provided significant input to DMH’s PowerPoint development.
- A3PCON adopted DMH’s PowerPoint to present topics to API communities of all ages including:
 - Overview of MHSA Act
 - Definition of SMI & SED symptoms
 - The Recovery Model
 - Community participation in the MHSA process

Outreach and Engagement

Translated Languages

- **Threshold languages:**
 - > Chinese
 - > Cambodian
 - > Korean
 - > Tagalog
 - > Vietnamese
- **Non-threshold languages:**
 - > Japanese
 - > Thai
 - > Lao

Outreach and Engagement

**Total DMH, Contract Agencies, and CBO's
Community Engagement presentations
completed in seven weeks in 2005**

- 49 presentations
- 7 Service Areas (of the 8)
- 14 API languages
- 12 ethnic communities
(unserved and underserved communities)

Common themes:

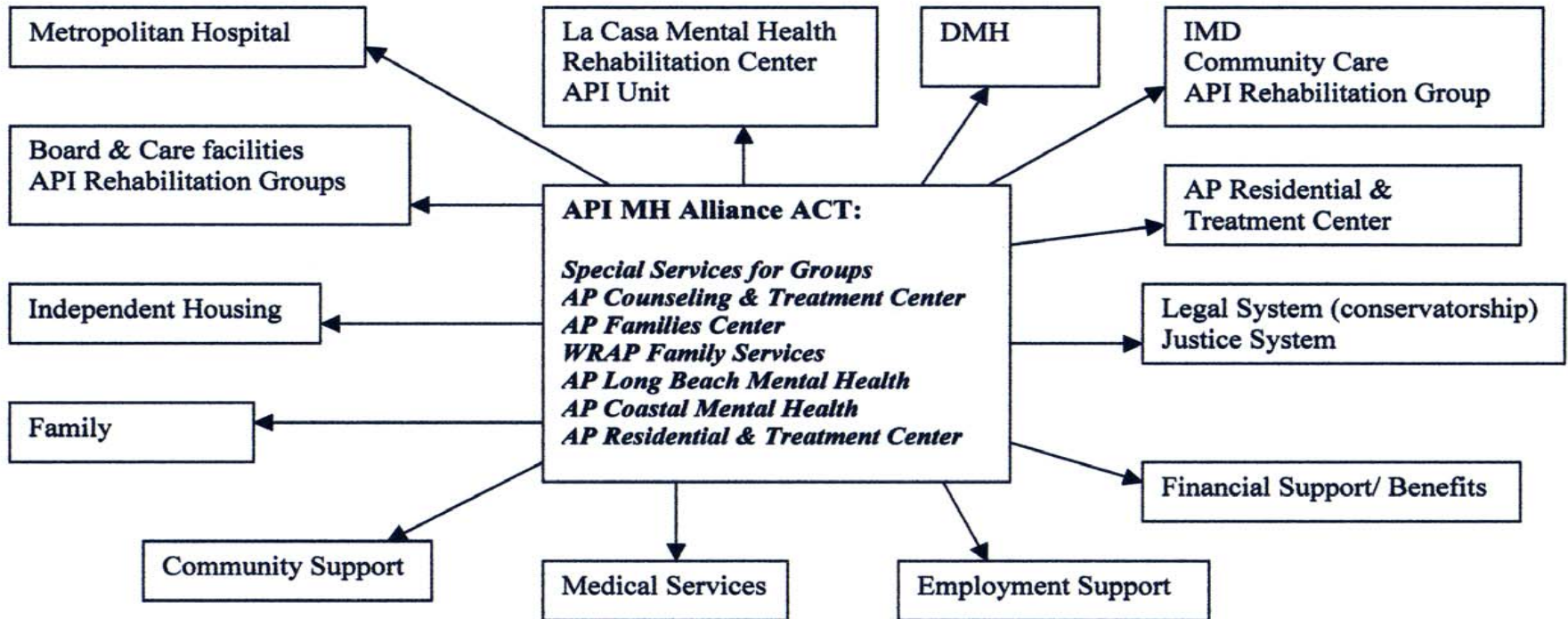
Participants had little knowledge about mental illness, DMH, and want more information!



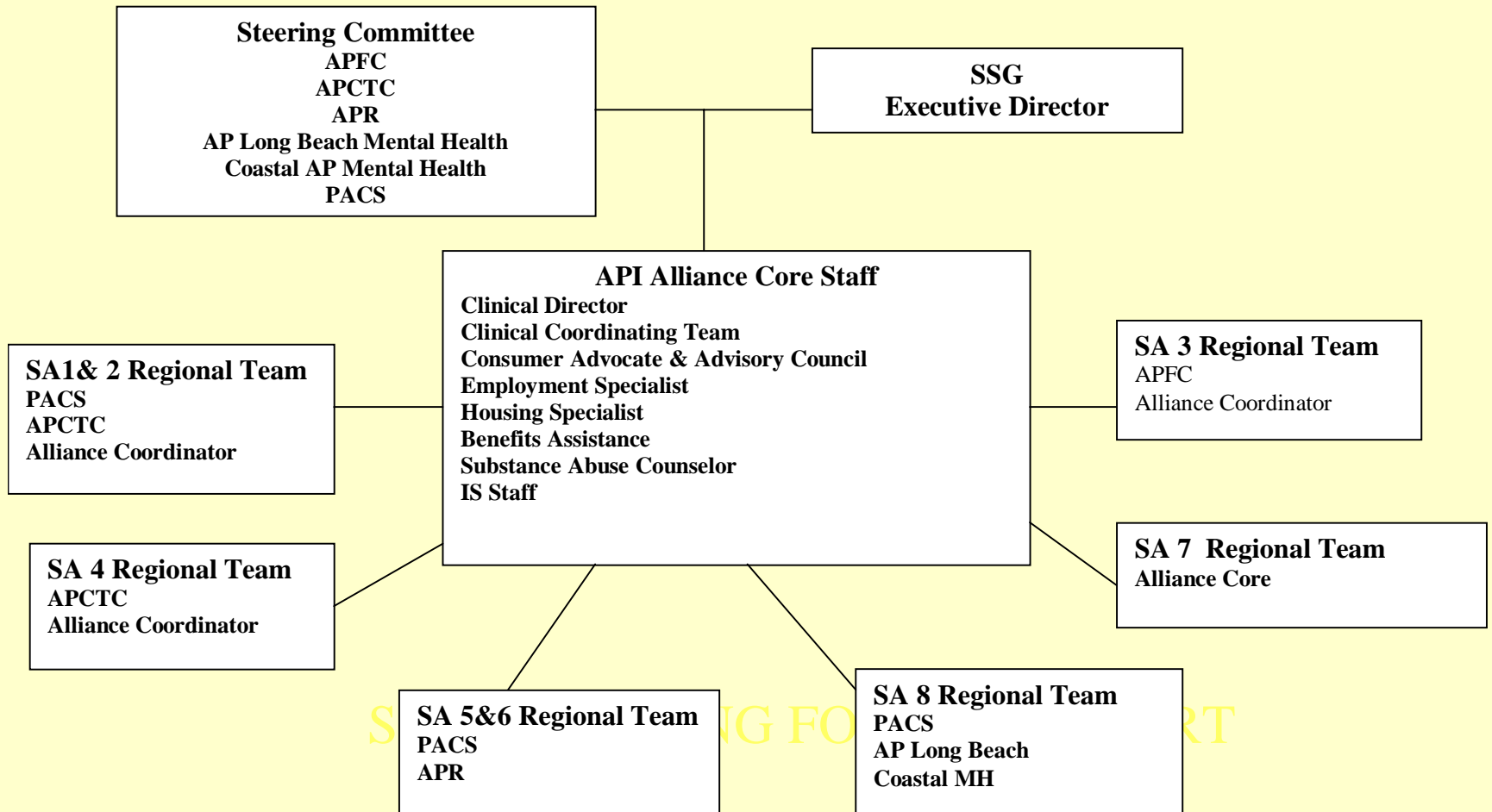
*Proposal and
Collaborative Development*

Adult Full Service Partnership Proposals

API Adults FSP Community Resources & Linkages



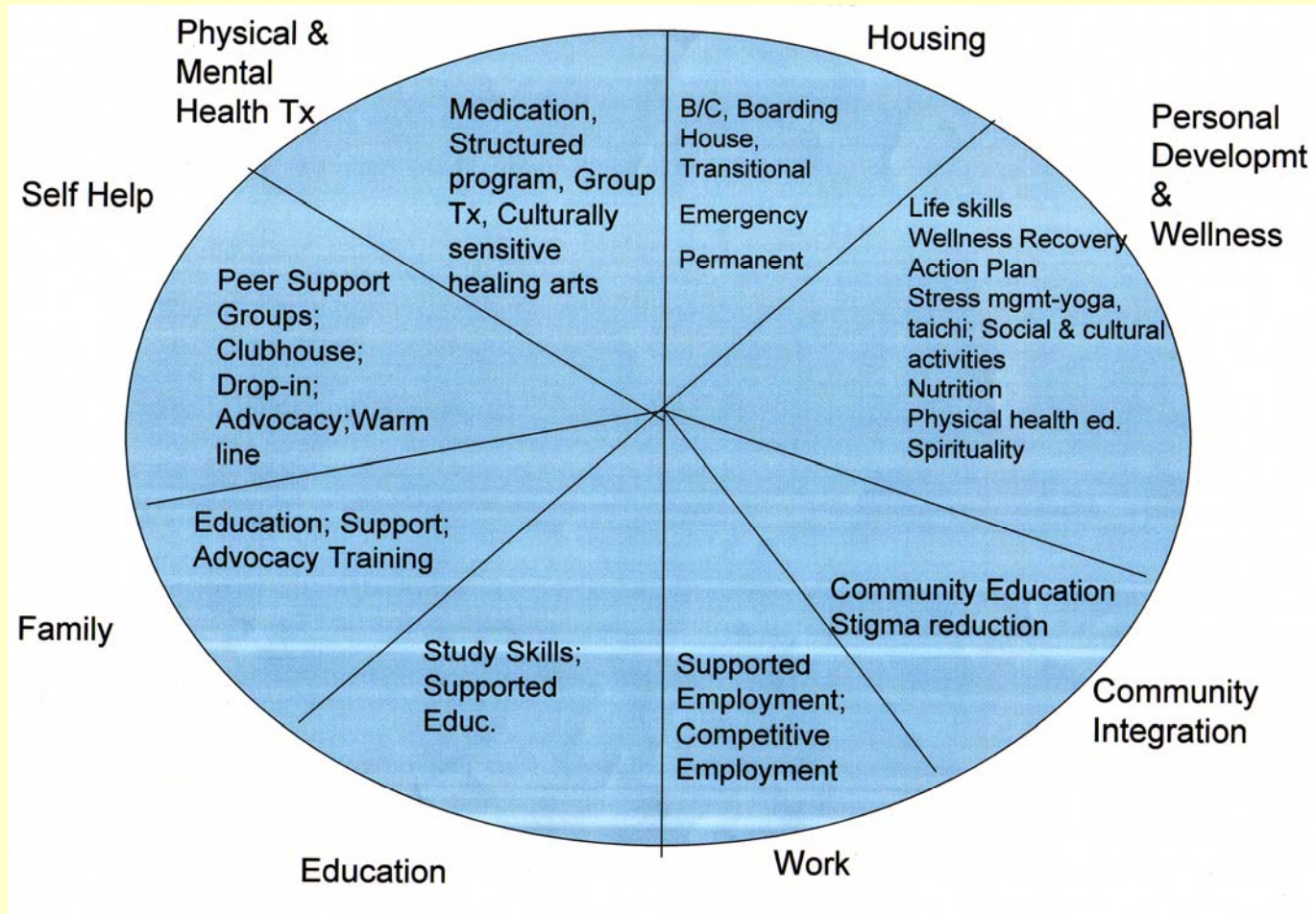
**PROPOSED API MENTAL HEALTH ALLIANCE ORGANIZATIONAL CHART
with
API Adult FSP***



*** FSP team includes: Mental health staff, Case Managers (Housing/employment/benefits/Substance Abuse)
Consumer Advocate, Clinical Supervisor**

Adult Full Service Partnership Proposals

Wellness & Recovery Plan: API Adults



Children Full Service Partnership Proposals

A3PCON L.A. County API Children Collaborative and Family Service Alliance (API - CAFSA)

Lead Agency

Pacific Clinics Asian Pacific Family Center

Role

- **Fiscal management**
- **Quality assurance**
- **Training**
- **Data entry**
- **Direct services (SA3)**

Children Full Service Partnership Proposals

A3PCON L.A. County API Children Collaborative and Family Service Alliance (API - CAFSA)

Partners for Direct Services

- Asian Pacific Counseling & Treatment Center
(Service Areas 2, 4, 8)
- Korean Youth Community Center
(Service Area 4)
- Pacific Asian Counseling Services
(Service Areas 5, 8)

Children Full Service Partnership Proposals

A3PCON L.A. County API Children Collaborative and Family Service Alliance (API - CAFSA)

Collaboration

Health:	Taiwan Buddhist Tzu Chi Medical Foundation, USA
Afterschool Tutorial and Social Program	PACS - Y.E.S. Office of Samoan Affairs, Inc. KYCC - Academic Services Unit Music Center - Arts CARE Salvation Army - Camp Services
Child Care	KYCC - Children's Centers

Children Full Service Partnership Proposals

API - CAFSA, continued

Collaboration

Mutual M.H. and
Other Service
Referral

SunBridge - Harbor View Center
For the Child
Bresee
DCFS - Asian Unit
LAUSD - Local District 4
LTSC

Shelter/Housing

Pacific Housings, Inc.
LTSC
Asian Pacific Women's Shelter

A3PCON One-Time Funding

Outreach and Engagement Proposal

Goal: to promote leadership and increased participation of API MH consumers & families within the LA County Mental Health SOC and MHSA activities.

Interventions:

(a) Infrastructure Development: Increase access to MH services for APIs; to continue to engage and outreach underserved API pops. to let them know about MHSA and the planning process;

(b) Mental Health Consumer Leadership Development: will focus on developing API MH consumers & families as advocates

A3PCON One-Time Funding

Workforce Development Proposal

Purpose: to revive the Asian American Mental Health Training & Research Center which provided fellowships, stipends, trainings to promote advanced leadership & professional practice in the API community.

History: the Center was funded 20 years ago and was responsible for graduating over 100 API master's and Ph.D. level MH professionals. Many of A3PCON's current members participated in the program.

A3PCON One-Time Funding

Workforce Development Proposal for Consumers

Purpose: in order to jump start employment opportunities for APIs affected by mental illness, A3PCON would like to replicate the Senior Community Service Employment Program. This national program under the Department of Labor has successfully placed older adults back into the workforce. It provides stipends to host agencies which will provide job training. A3PCON firmly believes this model will open doors for the mentally ill in the API community.



THANK YOU!